

CELDUR DEPLOYABLE CONTAINER

NATO STOCK NUMBER: TO CONSULT



DESCRIPTION

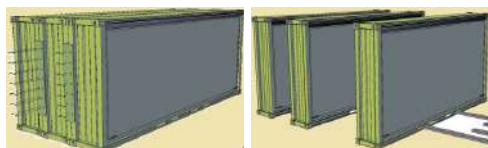
CELDUR technology developed by Hispano Vema allows to multiply logistic capabilities on every type of transport and deployment. CELDUR maximizes space on the transportation (Air, Land, Sea and Railway) and enables rapid deployment in few minutes of all Mission capabilities.

Available in 3 configurations (1:1, 2:1, 3:1), CELDUR optimize ISO 20' container space volume on transportation and provides a complete range of operational capabilities: Accommodation, kitchen, ablution, command post, hospital..

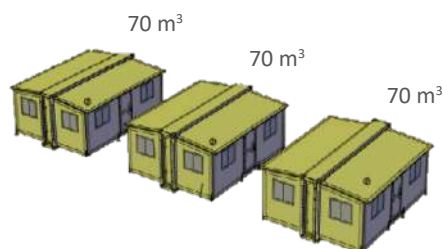
MODEL	SET (Nbr Containers)	INDIVIDUAL DEPLOYMENT VOLUME	TRANSPORT DIMENSIONS	TOTAL TRANSPORT VOLUME	TOTAL DEPLOYMENT VOLUME
1:1	1	92 m ³	ISO 20'	35 m ³	92 m ³
2:1	2	75 m ³	ISO 20'	35 m ³	150 m ³
3:1	3	70 m ³	ISO 20'	35 m ³	210 m ³

CELDUR provides capacity to multiply transported volume on deployment volume, optimizing logistic capabilities in the operation field. With multiply factors of x2,6(CELDUR 1:1) , x4,2 (CELDUR 2:1) and x6 (CELDUR 3:1)

DEPLOYMENT CELDUR 3:1



Transport and storage mode
35m³



Total deployment volume
210 m³

CELDUR DEPLOYABLE CONTAINER

NATO STOCK NUMBER: TO CONSULT

CELDUR 3:1 OPERATIONAL CAPABILITIES



CELDUR 2:1 OPERATIONAL CAPABILITIES



CELDUR 1:1 OPERATIONAL CAPABILITIES



EXAMPLE OF FIELD CAMP 100 PEOPLE

